



15 Bishop Street NEW TOWN, TAS

 4
  2
  1

FABULOUS BISHOP STREET

Ripple are absolutely delighted to offer this beautiful character home to the market.

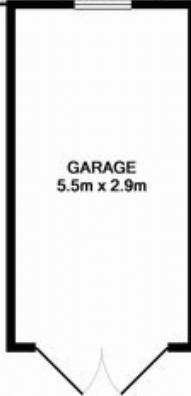
A literal 'rambling rose' this house offers a versatile floor-plan incorporating an extension at the rear which could easily be configured for any number of uses including teenage bedrooms (x2), their own living room and bathroom AND study! or a perfect 'work from home' space allowing true separation of 'work' and 'home'

Everything about this home is inviting. Wide entrance hall, beautifully proportioned large rooms, open plan dining adjacent to large galley kitchen which incorporates a 'breakfast nook/study' area - there is even a 'secret squirrel' pull down ladder to the attic - a great 'head height' space that is super for storage or any number of uses. The rear grounds a

Angelina Drobina

Principal

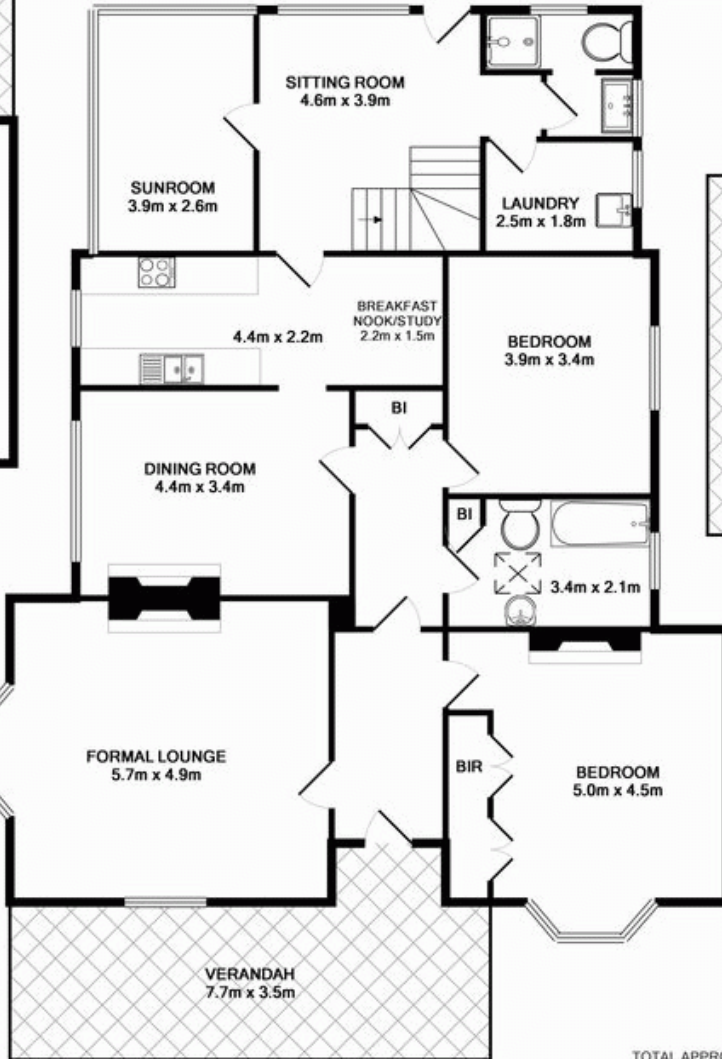
0416163014



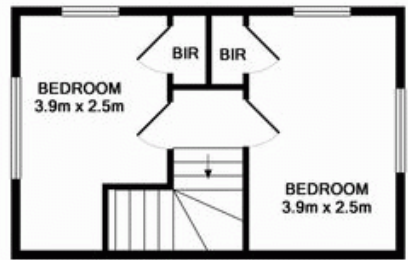
APPROX. FLOOR AREA 16.1 SQ.M. (174 SQ.FT.)



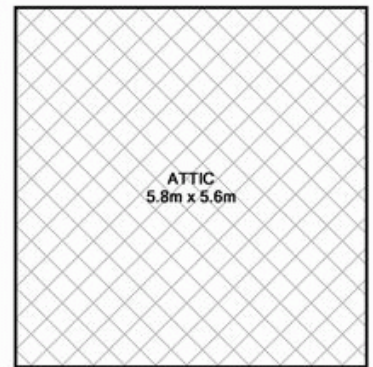
APPROX. FLOOR AREA 8.1 SQ.M. (87 SQ.FT.)



GROUND FLOOR APPROX. FLOOR AREA 141.5 SQ.M. (1523 SQ.FT.)



1ST FLOOR APPROX. FLOOR AREA 24.2 SQ.M. (261 SQ.FT.)



ATTIC

TOTAL APPROX. FLOOR AREA 189.9 SQ.M. (2044 SQ.FT.)

Whilst every attempt has been made to ensure the accuracy of the floor plan contained here, measurements of doors, windows, rooms and any other items are approximate and no responsibility is taken for any error, omission, or mis-statement. This plan is for illustrative purposes only and should be used as such by any prospective purchaser. The services, systems and appliances shown have not been tested and no guarantee as to their operability or efficiency can be given.