

2 Moorina Crescent BERRIEDALE, TAS



OUTSTANDING VALUE - NEW HOME PRESENTATION - JUST UNPACK AND RELAX

What a fantastic offering - this home represents unbeatable value for those seeking a wonderful home with great proximity to schools, shops and transport under \$300,000.

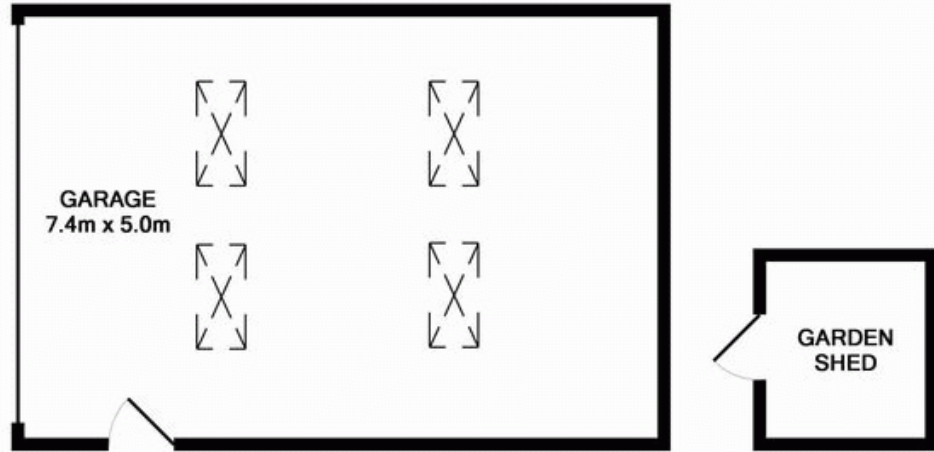
Where to start? New EVERYTHING! - New roof, new aluminium windows, new kitchen and bathroom, new quality floor coverings and window furnishings, HUGE lock up garage/workshop - the list goes on and on!

As mentioned the off street parking is SUPER! - The garage easily accommodates a large vehicle with ample left over space to utilise as a work-shop - even the garage ceiling is cleverly designed with laser light sections - an awesome 'man-cave!' There is power AND water in the garage also! Behind locked gates another vehicle can easily be housed and in addit

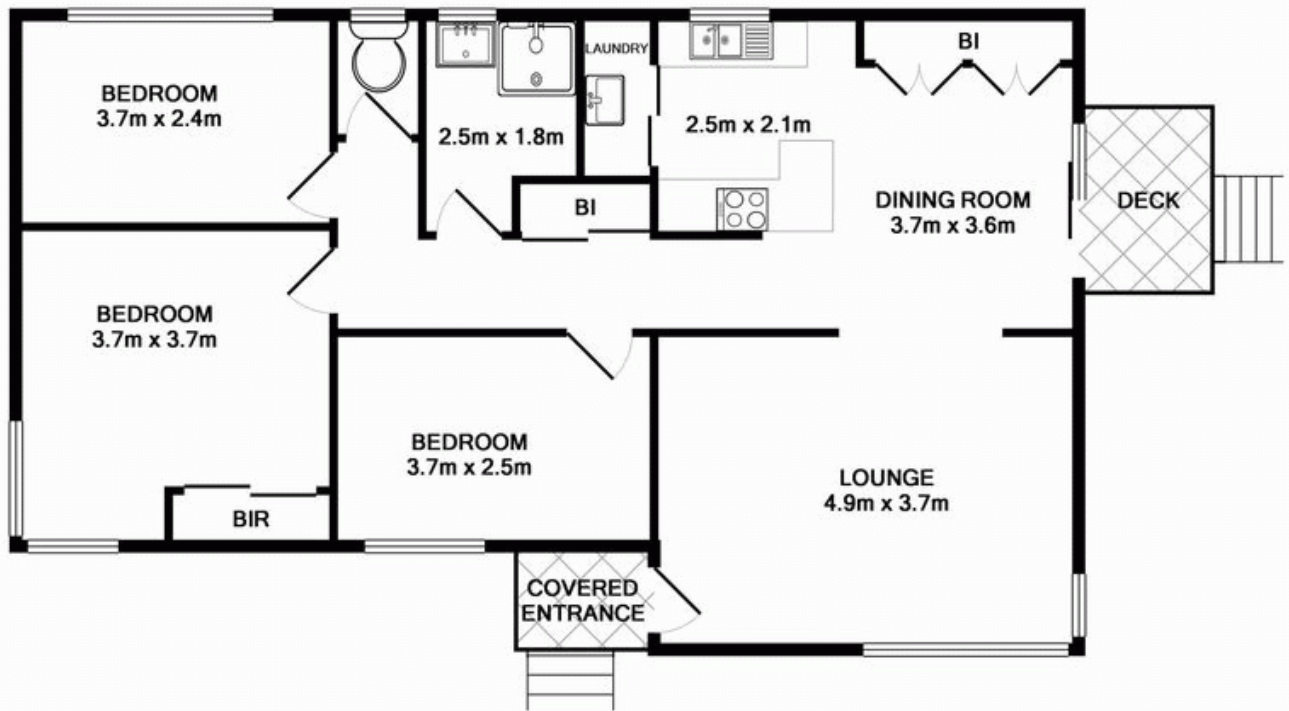
Warwick Page

Director & Real Estate Agent

0474122717



APPROX. FLOOR
AREA 41.5 SQ.M.
(447 SQ.FT.)



APPROX. FLOOR
AREA 80.7 SQ.M.
(869 SQ.FT.)

TOTAL APPROX. FLOOR AREA 122.2 SQ.M. (1316 SQ.FT.)

Whilst every attempt has been made to ensure the accuracy of the floor plan contained here, measurements of doors, windows, rooms and any other items are approximate and no responsibility is taken for any error, omission, or mis-statement. This plan is for illustrative purposes only and should be used as such by any prospective purchaser. The services, systems and appliances shown have not been tested and no guarantee as to their operability or efficiency can be given