



7 Chippendale Street CLAREMONT, TAS



3



1



2

SOLD

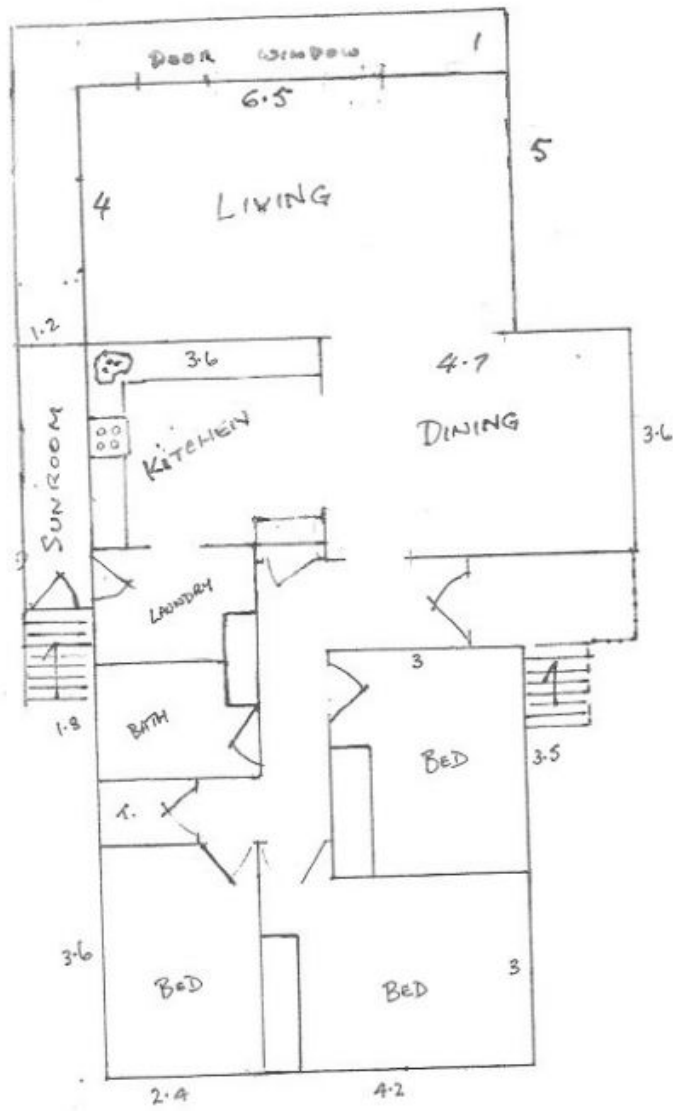
Whether seeking to buy a home for yourself, or an addition to your growing portfolio, the captivating River vistas from this Chippendale Street property provide a terrific temptation.

Positioned only a few hundred metres from the water, with views towards Mount Direction, you can easily walk to the River, and enjoy meandering around the nearby parkland areas for a fraction of the price that this luxury might cost elsewhere.

The bathroom features all modern fixtures and fittings, and there is no work left to be do

Mel Shutt

Director and Property
Consultant
0428428884



7 CHIPPENDALE.