



154 Springfield Avenue WEST MOONAH, TAS



PRIVATE FAMILY HOME WITH FLEXIBLE LAYOUT

An unusual home in its layout and constructed in 1965, the spacious and flexible accommodation was originally set up as two separate flats with accommodation as follows:

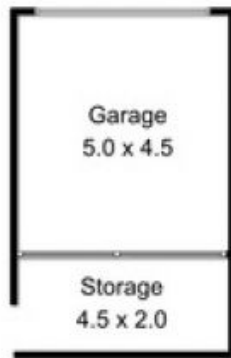
Upper floor: neat kitchen with good bench space that has a dining or living adjoining which has access to a large recently constructed private deck which has lovely view over West Moonah down to the river, double bedroom with built-ins, formal lounge room (or second bedroom) and bathroom with separate shower.

Inspections are by private appointment only contact Stuart today to secure your early vie

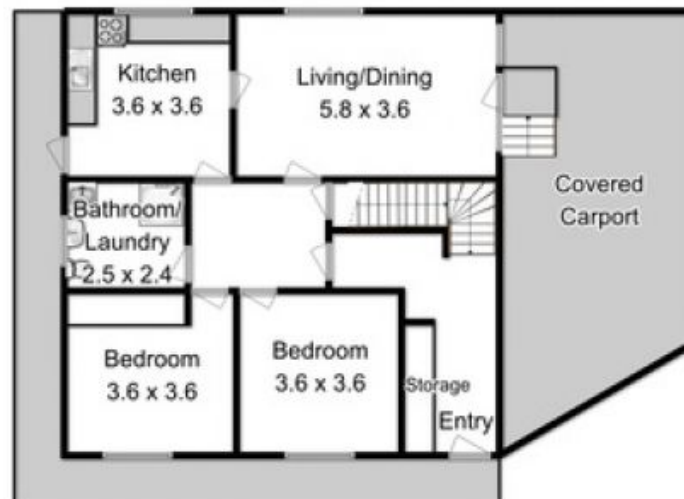
Warwick Page

Director & Real Estate Agent

0474122717



Approx. First Floor Area: 89 Sqm



Approx. Ground Floor Area: 89 Sqm



Fixtures and Fittings are for display only and not to scale.
 This floor plan is a sketch for illustration.
 All measurements are internal and approximate.
 Produced by open2view.com