



2/4 Jersey Street SANDY BAY, TAS



2



1



1

IMPRESSIVE UNIT IN ICONIC GROSVENOR HOUSE

Be impressed with this outstanding 2 bedroom immaculately renovated unit set in the heart of Sandy Bay. Boasting a huge master bedroom with built ins and a second bedroom also with built ins.

The good sized open plan living/dining room is light-filled and the renovated kitchen with Miele appliances offers good storage and bench space.

The modern bathroom has a spa bath with shower over, heated towel rail and enclosed laundry space.

Close to all local amenities, schools, UTAS and local shops and a mere 10 min walk to Hobart

Council Rates: \$1,300.00/year (approx)

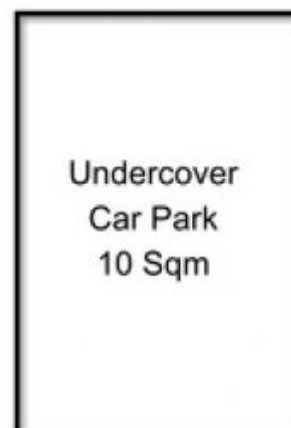
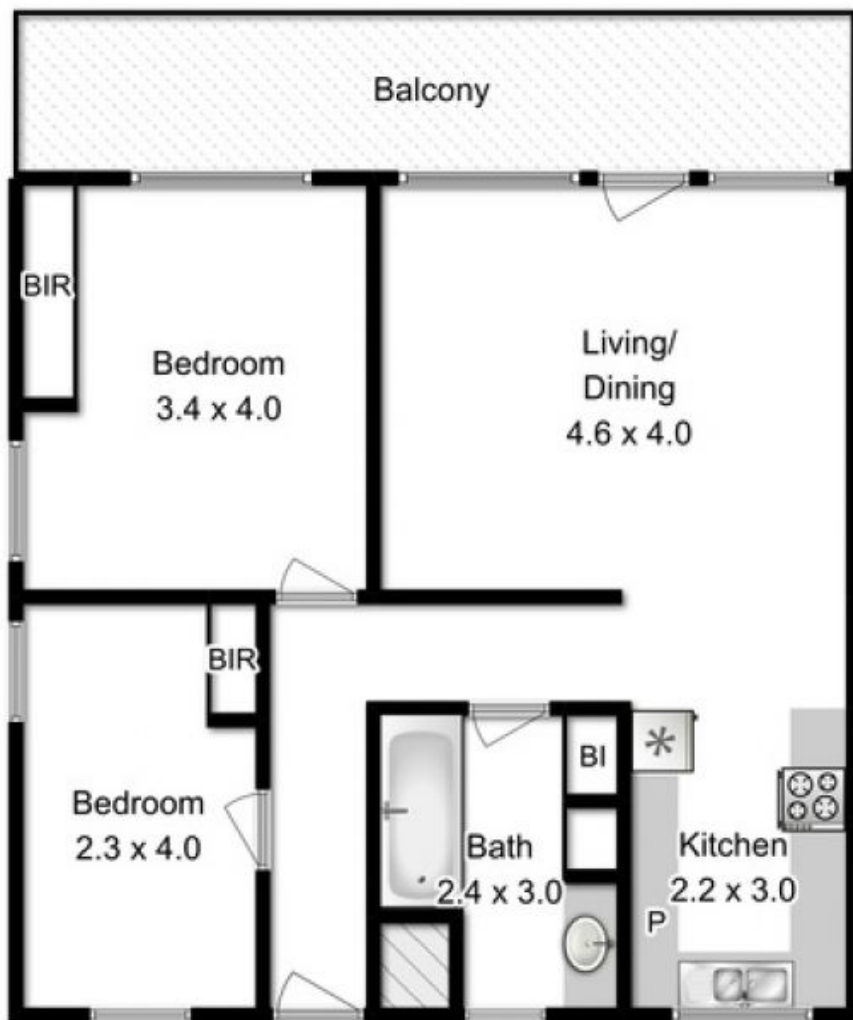
Water Rates: \$784.00/year (approx)

Strata Rates: \$3,840.00/year (approx)

Warwick Page

Director & Real Estate Agent

0474122717



Floor area approx: 72sqm

This floorplan is a sketch for illustration only

Not to scale

All measurements are internal and approximate

Produced by open2view.com for Ripple Realty