



9 Cotswold Place MOONAH, TAS



FABULOUS FAMILY HOME IN A QUIET CUL DE SAC LOCATION

Walking into the home you can see the majority of the features of the late 1940s are still intact including wide skirtings, high ceilings, ornamental ceiling features & corning and polished timber floor boards.

The wide entry takes you into the lounge room which is bathed in natural light and painted in a neutral palette and offering polished floor boards which flow into the dining room which offers excellent space for the family dining table.

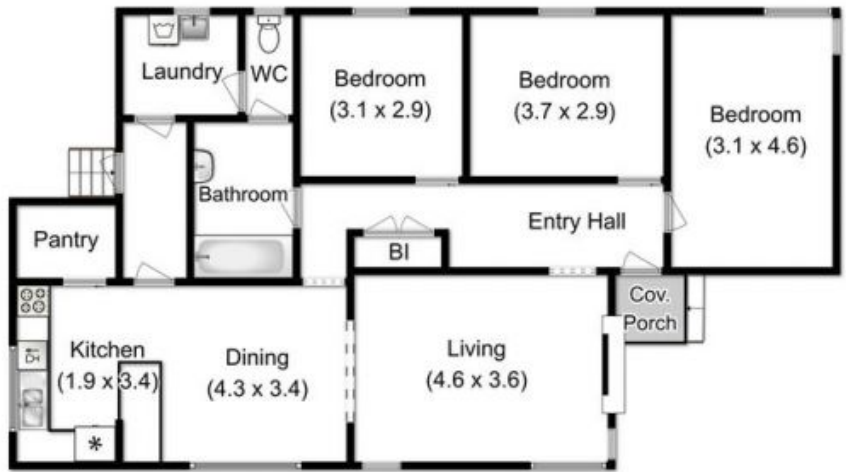
The three bedrooms are all on the same side of the home with the master offering a wardrobe with hanging and shelves.

The family bathroom has been recently renovated with quality floor & wall tiles with a sho

Warwick Page

Director & Real Estate Agent

0474122717



All measurements are internal and approximate.
This plan is a sketch for illustration, not valuation.
Produced by Open2view.com for Ripple.

Approx. floor area : 115 sqm
Approx. outbuilding area : 56 sqm

