



15/1 Plimsoll Place SANDY BAY, TAS



Outstanding apartment living

A complete makeover has transformed this stylish and contemporary second floor apartment that includes everything you could need for set-and-forget living. Situated close to the heart of Sandy Bay, central Hobart, and university campus - this superior one-bedroom property will appeal to a range of purchasers looking for convenience and comfort.

It comes with a proven track record from previously operating as an Airbnb, and there is an option to purchase the existing furniture - so you can reap the rewards of your investment or make yourself at home without delay.

Undercover parking is allocated, but the location's proximity means having your own transp

Inspect: Saturday, 20th July 2024 12:00 - 12:30

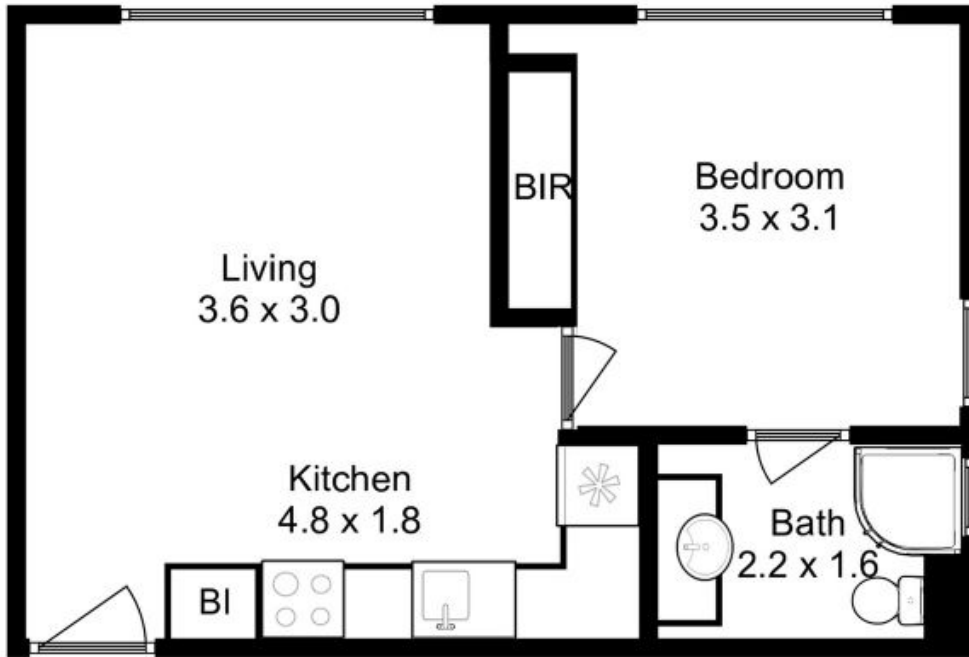
Council Rates: \$1,500.00/year (approx)

Water Rates: \$1,100.00/year (approx)

Strata Rates: \$1,600.00/year (approx)

Mel Shutt

Director and Property
Consultant
0428428884



All measurements are internal and approximate.
This plan is a sketch for illustration, not valuation.
Produced by Open2view.com for Ripple.

Approx. floor area : 39 sqm

