



4/8 Binney Court SANDY BAY, TAS

 2
  1
  1

## Set-and-forget living with stunning views

Comfortable, stylish, and with magnificent views over Hobart's two dominant landmarks - kunanyi/Mt Wellington and the Derwent River - this sunny two-bedroom apartment's prime location just 10 minutes from central Hobart makes it an unmissable opportunity for astute investors or buyers looking for a convenient and quiet place to call home.

Situated on the top level of a small complex of four units, the double brick building has been completely re-wired - a significant task already taken care of for you.

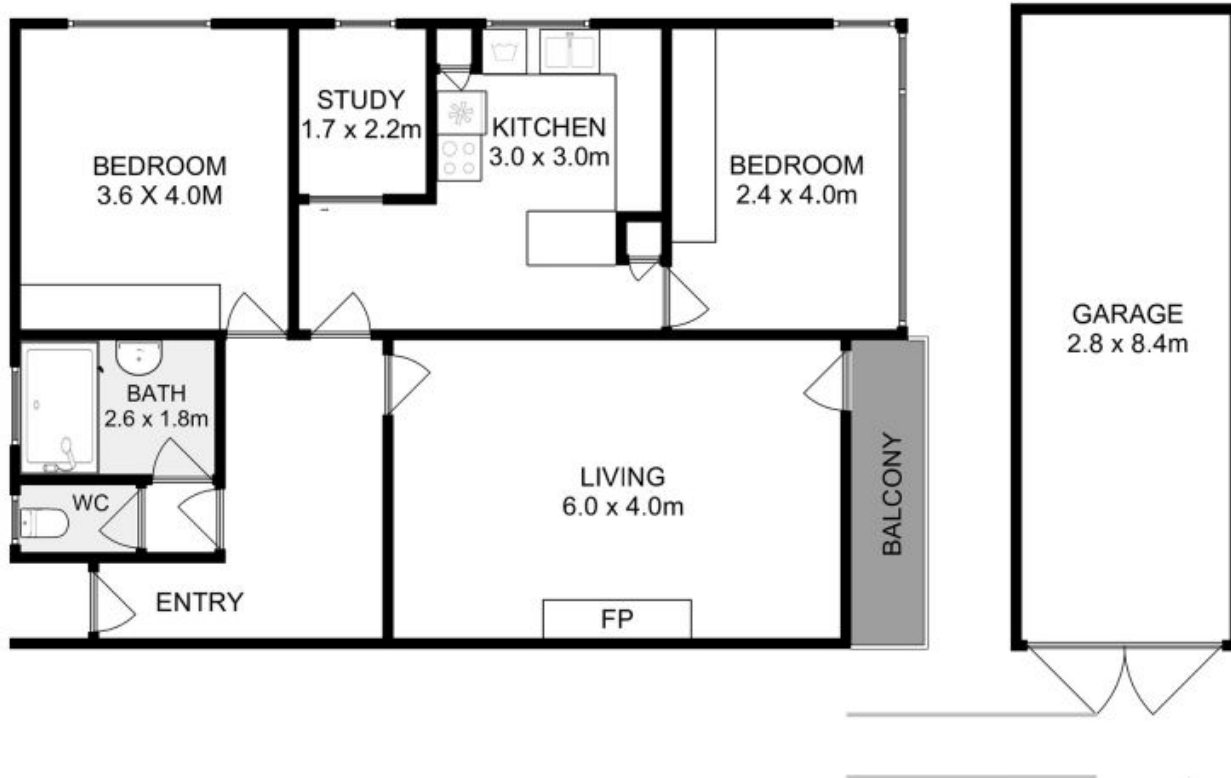
The property is currently operating as an Airbnb and comes with a proven track record as successful short-stay accommodation. You can purchase this superb property vacant, or with

**Inspect:** Saturday, 7th September 2024 11:00 - 11:30

## Warwick Page

Director & Real Estate Agent

0474122717



All measurements are internal and approximate.  
This plan is a sketch for illustration, not valuation.  
Produced by Open<sup>2</sup>view.com for Ripple.

Approx. Floor area : 97 sqm  
Approx Garage area : 23 sqm

