



210 Cambridge Road WARRANE, TAS



3



1



3

Amazing potential and convenient location

Set in a sunny and convenient location with both bush and mountain views, here is a wonderful opportunity for first-time buyers, renovators, or developers who can see this spacious three-bedroom home's outstanding potential.

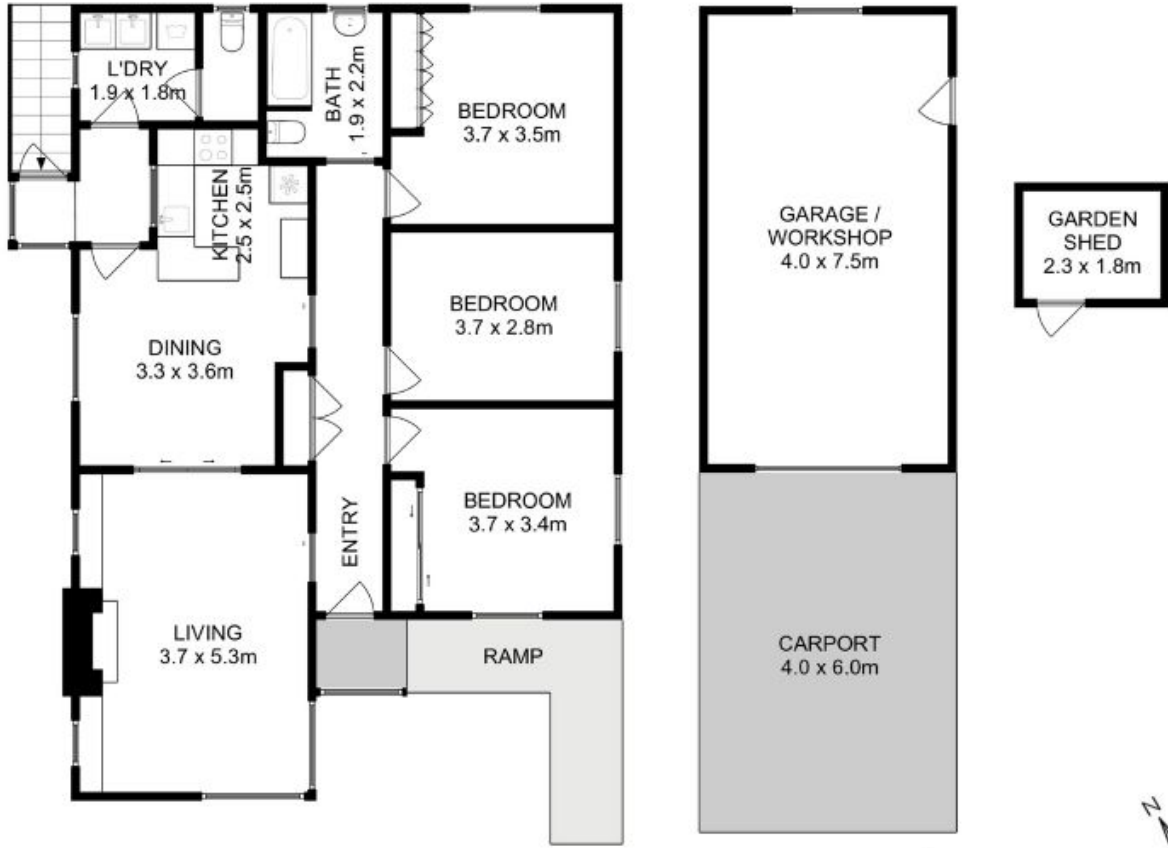
Built in 1955, with a practical exterior of vinyl cladding that will last a lifetime, the interior has an abundance of character and original features and will appeal to those with a flair for design and an interest in applying their individual style to the home's solid base.

Pleasant low maintenance gardens and a generous enclosed backyard is perfect for kids and pets to play safely. Those keen to start a veggie garden will appreciate the extra space a

Warwick Page

Director & Real Estate Agent

0474122717



All measurements are internal and approximate.
 This plan is a sketch for illustration, not valuation.
 Produced by Open2view.com for Ripple.

Approx. floor area : 109 sqm
 Approx. outbuilding area : 34 sqm